

Prisco digital



Esko Kongsberg C Series

HP Latex R2000 Plus



Equipment Catalog 2019



RICOH Pro C9200 Series

Welcome to PriscoDigital

PriscoDigital is a national channel partner for HP Scitex, HP Latex, HP Stitch, Esko, RICOH, and Highcon. We are the leading provider of commercial and industrial printing technologies for the commercial printing market. PriscoDigital focuses on the sales and finance of a digital enterprise, including digital production printers, large-format industrial printers and finishing solutions. Our unique offering includes additional services in G7 calibration, color management, applications and software training, elite wide format sales training and consumables.

The goal of this catalog is to showcase the most common items used in digital printing. We are partners with a variety of manufacturers and can provide many of the products that they offer.



Highcon



Prisco US Locations



Consumable Orders

Order forms can be found at:
<https://prisco.com/media-supplies/>
Email orders to:
pdorder@prisco.com

Ordering Media

Media Lists and Pricing can be found at:
<https://prisco.com/media-supplies/>
Email orders to:
pdorder@prisco.com
Media and Applications questions:
pdsupstrates@prisco.com

Product Information

Email questions to:
pdsales@prisco.com

Pricing

All prices and product availability are subject to change without notice. **Prices are current as of September 1, 2018.**

Consumable/Media Ordering

Please email your order to our Customer Service team at:
pdorder@prisco.com

For questions, call:
800-241-6049 - Option #2

Freight

Freight charges may vary by location.

PriscoDigital Team

Steve Zunde

President
PriscoDigital LLC
zundes@prisco.com

Steve Potthoff

Digital Sales Specialist - Northeast/Canada
610-314-1435
potthoffs@prisco.com

Jason Darrah

Director - Training & Business Development
513-295-0901
darrahj@prisco.com

Martin Ella

National Sales Administrator
973-589-7800 ext 2209
ellam@prisco.com

Clay Mizelle

Digital Sales Specialist - Ohio Valley/Southeast
513-325-0405
mizellec@prisco.com

Justin Burger

Technical and Demo Center Manager
404-433-0323
burgerj@prisco.com

Tom Stopulos

Digital Sales Specialist - Central/Southwest
563-529-4312
stopulost@prisco.com

Tom Swan

Digital Sales Consultant - West
714-747-4361
swant@prisco.com

Introducing

HP Latex R Series

It's here! The long awaited, highly anticipated HP Latex Flatbed Printer.



HP Latex R2000 Plus



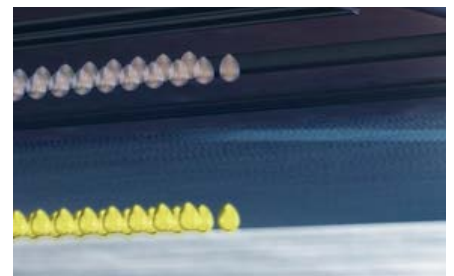
HP Latex R1000 Plus



New HP Rigid Latex Inks deliver unprecedented quality on rigid media.



Get the glossiest white on transparent and colored media with high-opacity white that resists yellowing over time.



HP Latex Overcoat provides outstanding scratch resistance.



Flexible printing option allows reliable unattended printing, automatic alignment, and a drop-in roll option.



No waste between white jobs with removable printheads stored in a Offline Rotation Chamber that stay ready to use as ink does not settle



Maintain high-quality prints with unattended, automatic printhead maintenance and cleaning.

HP Latex R2000 Plus Printer



HP Latex R1000 Plus Printer



Roll to Roll Printing



Extension Tables



Achieve amazing colors on both rigid and flexible media

- Get vibrant HP Latex color gamut on rigid while preserving media gloss and feel, and prints with no smell.

Expand your offerings with "on-demand" white ink

- Transform any transparent or colored media with a glossy, high opacity white ink that resists yellowing over time.

Increase your productivity with smarter printing

- Meet production peaks with high-speed quality, continuous loading and N-up printing.

PRODUCT	HP Latex R2000 Printer Plus
DETAILS	98.4" Wide • CMYKcm+Optimizer+Over Coat • White Ink Printing Kit Roll Printing Kit • Extension Tables • 1200 dpi • Double sided printing N-up printing • Full bleed printing • Auto media detection
UPGRADES/ ACCESSORIES	HP Latex R2000 Extension Tables • HP Latex R Series Uptime Kit HP Latex R Series Expert Kit
PRICE	\$219,999

PRODUCT	HP Latex R1000 Plus
DETAILS	64.4" Wide • CMYKcm+Optimizer+Over Coat • White Ink Printing Kit Roll Printing Kit • Extension Tables • 1200 dpi • Double sided printing N-up printing • Full bleed printing • Auto media detection
UPGRADES/ ACCESSORIES	HP Latex R1000 Extension Tables • HP Latex R Series Uptime Kit HP Latex R Series Expert Kit
PRICE	\$159,999

HP Latex 365 Printer



Exceed client expectations with production speeds ideal for handling urgent jobs. The HP Latex 365 Printer produces indoor and outdoor prints on a variety of traditional signage substrates—even textiles. And high-quality, durable prints provide scratch resistance comparable to hard-solvent inks.

PRODUCT	HP Latex 365 Printer
DETAILS	64" roll width • Indoor Quality (8 pass) @ 183 ft ² /hr • Up to 1200 x 1200 dpi CMYKcm+Optimizer • 8" touchscreen • Spectrophotometer HP Custom Substrate Profiling • Ink collector for fabrics or porous substrates
UPGRADES/ACCESSORIES	HP Latex 64" Printer 3" Spindle • HP Latex 300/500 User Maintenance Kit HP Latex 64" Printer 2" Spindle • HP Latex 300/500 Ink Collector
PRICE	Ask for Quote

HP Latex 560 Printer



Address production peaks in-house. Get vivid, consistent day-one image quality throughout the life of the printer. With quick loading and automatic maintenance, you can respond fast—and keep costs low.

PRODUCT	HP Latex 560 Printer
DETAILS	64" roll width • Indoor Quality (8 pass) @ 248 ft ² /hr • Up to 1200 x 1200 dpi CMYKcm+Optimizer • 8" touchscreen • Spectrophotometer HP Custom Substrate Profiling • Ink collector for fabrics or porous substrates Spindleless system • Wiper roller • Vivid print modes
UPGRADES/ACCESSORIES	HP Latex 300/500 User Maintenance Kit • HP Latex 500 Series Wiper Roller HP Latex 500 Series Ink Collector • HP Latex 500 Series Beacon
PRICE	Ask for Quote

HP Latex 570 Printer



Expand your capacity with a printer optimized for fleet management. Drive high productivity with fast print speeds, along with workflow and cost efficiencies.

PRODUCT	HP Latex 570 Printer
DETAILS	64" roll width • Indoor Quality (8 pass) @ 248 ft ² /hr • Up to 1200 x 1200 dpi CMYKcm+Optimizer • 8" touchscreen • 3 liter ink cartridges HP Custom Substrate Profiling • Ink collector for fabrics or porous substrates Spindleless system • Wiper roller • Spectrophotometer • Vivid print modes
UPGRADES/ACCESSORIES	HP Latex 300/500 User Maintenance Kit • HP Latex 500 Series Wiper Roller HP Latex 500 Series Ink Collector
PRICE	Ask for Quote

HP Latex 1500 Printer



Achieve high-quality results and fast turnarounds. Stay competitive with this affordable 126 in HP Latex printer. This is fast, superwide production at the quality you expect—and at low running costs.

PRODUCT	HP Latex 1500 Printer
DETAILS	126" roll width • Indoor High Quality (6 pass) @ 480 ft ² /hr • Up to 1200 x 1200 dpi • CMYKcm+Optimizer • Internal print server • Printer status beacon Media saver • HP OMAS & Spectrophotometer • Carbon fiber 126" spindles
UPGRADES/ACCESSORIES	HP Latex 1500 Dual Roll Kit • HP Latex In-line Slitters HP Latex 1500 Double-sided Day Night Kit • HP Latex 1500 Roll-to-freefall Kit HP Latex 1500 Ink Collector Kit • HP Latex 1500 Ink Collector Foams Kit HP Latex 1500 Media Saver Kit • HP Latex 1500 Edge Holder Kit
PRICE	Ask for Quote

HP Scitex FB750 Industrial Printer



Increase productivity and grow your business with the reliable HP Scitex FB750 Industrial Printer. Print high-quality results on rigid and flexible media with this versatile, compact device.

PRODUCT	HP Scitex FB750 Printer
DETAILS	98.4" Wide • CMYKcm • Up to 1200 x 600 dpi • Double sided printing N-up printing multi-images • Full bleed printing • Auto media detection
UPGRADES/ ACCESSORIES	FB750 Roll Printing Kit • FB550/750 White Ink Upgrade FB750 Extension Tables • FB550/750 Uptime Parts Kit
PRICE	Ask for Quote

HP Scitex FB550 Industrial Printer



Expand your portfolio and reach new customers, with the HP Scitex FB550 Industrial Printer. Produce quality results on virtually any rigid and flexible media with a device that fits your budget and workspace.

PRODUCT	HP Scitex FB550 Printer
DETAILS	64" Wide • CMYKcm • Up to 1200 x 600 dpi • Double sided printing N-up printing multi-images • Full bleed printing • Auto media detection
UPGRADES/ ACCESSORIES	FB550 Roll Printing Kit • FB550/750 White Ink Upgrade FB550 Extension Tables • FB550/750 Uptime Parts Kit
PRICE	Ask for Quote

HP Scitex 9000 Industrial Press



Gain industrial-grade productivity with an entry-level investment in the HP Scitex 9000 Industrial Press. See your opportunities to compete for more jobs increase, thanks to high print quality and a broad application span.

PRODUCT	HP Scitex 9000 Press
DETAILS	Rigid and flexible sheets up to 63" x 126" • HP Scitex High Dynamic Range (HDR) Printing Technology • CMYKcm • Up to 60 full-size sheets/hr
UPGRADES/ ACCESSORIES	HP Scitex 9000 Footprint Optimizing Kit • HP Scitex HDR Folding Hood Upgrade HP SmartStream Production Analyzer
PRICE	Ask for Quote

HP Scitex 11000 Industrial Press



Grow your offering and your business with outstanding versatility. You can improve margins with the industrial productivity and quality offered by the HP Scitex 11000 Industrial Press. Confidently convert more projects to digital with ongoing press enhancements, tools, and support services.

PRODUCT	HP Scitex 11000 Press
DETAILS	Rigid and flexible sheets up to 63" x 126" • HP Scitex High Dynamic Range (HDR) Printing Technology • CMYKcm • Up to 127 full-size sheets/hr
UPGRADES/ ACCESSORIES	HP Scitex Multi-sheet Loader Kit • HP Scitex ¾ Automated Single-sheet Loader HP SmartStream Production Analyzer • HP Scitex HDR Folding Hood Upgrade
PRICE	Ask for Quote

Caldera VisualRIP / GrandRIP

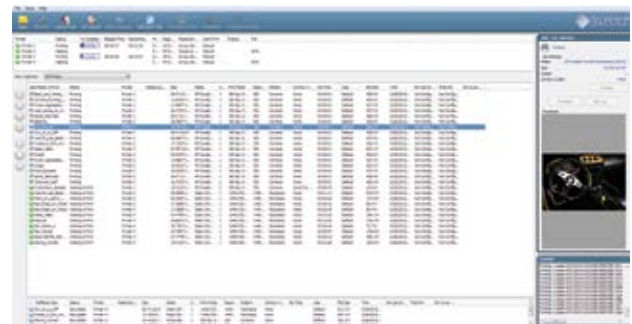


VisualRIP has a host of sophisticated features and an intuitive GUI, that facilitates complex, multi-device workflows for more effective large-format print and print-to-cut production. Utilizing a powerful ICC color calibration engine and a range of optional modules, this is the ideal RIP solution for growing businesses.

GrandRIP provides speed, reliability and flexibility for a busy production environment, in addition to handling all your print and print-to-cut applications. With the inclusion of APPE and EasyMEDIA, and with advanced overlap and tiling management, GrandRIP offers the ultimate workflow solution for large-scale wide- and superwide-format printing.

PRODUCT	VisualRIP Pro • GrandRIP Pro • GrandRIP Enterprise • GrandRIP Platinum
DETAILS	VisualRIP Pro: Caldera APPE RIP, Prepress, Tiling, 1 Large Print Driver, 1 Cut Server GrandRIP Pro: Caldera APPE RIP, Prepress, Tiling, 1 Grand Print Driver, 1 Cut Server GrandRIP Enterprise: Caldera APPE RIP, Prepress, Tiling, 1 Grand Print Driver, 1 Cut Server, 1 Grand Cut Server, Cost Calculation GrandRIP Platinum: Caldera APPE RIP, Prepress, Tiling, 4 Grand Print Drivers, 1 Cut Server, 1 Grand Cut Server, Cost Calculation
UPGRADES/ACCESSORIES	GrandCut Server • Trim-O-Matic • InkPerformer • Cost Calculation Print Standard Verifier • CalderaCare
PRICE	VisualRIP Pro: \$1,795.00 • GrandRIP Pro: \$3,995.00 GrandRIP Enterprise: \$5,595.00 • GrandRIP Platinum: \$7,595.00

Onyx Thrive / PosterShop



ONYX Thrive workflow software is a scalable print production solution based on Adobe® PDF Print Engine technology. ONYX Thrive is a true end-to-end PDF workflow from digital file submission through printing and cutting. The Thrive Production Manager browser-based user interface enables workflow control from anywhere, optimizing both operator and output device productivity.

ONYX PosterShop is wide format RIP software that enables shops to unify their print production process on more than one device and provides the tools to maintain consistent output quality. Print service providers will be able prepare jobs for print quickly and find it easy to automate repetitive tasks resulting in sellable prints faster.

PRODUCT	Onyx Thrive 211, 421, 642, 862 • PosterShop
DETAILS	PosterShop: 1 Rip-Queue, 2 Active Printers, 1 Active RIP ProductionHouse: 1 Rip-Queue, 4 Active Printers, 2 Active RIPs Thrive 221: 2 APPE, 1 Active Printer, 1 Job Editor Thrive 421: 4 APPE, 2 Active Printers, 1 Job Editor Thrive 642: 6 APPE, 4 Active Printers, 2 Job Editors Thrive 862: 8 APPE, 6 Active Printers, 2 Job Editors
PRICE	Thrive 221: \$3,495.00 • Thrive 421: \$4,995.00 Thrive 642: \$6,995.00 • Thrive 862: \$8,995.00 PosterShop: \$3,295.00

Kongsberg C Series



The new Kongsberg C table is designed to keep up with the faster, wider printers of today and tomorrow. Exceeding the standards in versatility, precision and productivity, it has everything that Kongsberg tables are noted for, and more.

It is the very first multifunction super-wide digital finisher for signage, display and packaging applications.

PRODUCT	Esko Kongsberg C24 • C44 • C60 • C64
DETAILS	C24: 66" x 126" • C60: 87" x 126" • C60: 126" x 63" • C64: 126" x 126" Max speed up to 66 in/sec Max acceleration up to 1.4 G • Carbon Fiber Traverse Auto Tool Calibration • Rack-and-Pinion Drive System
UPGRADES/ ACCESSORIES	Conveyor System • 3kW High-Performance Milling Unit Heavy Duty Tool Unit • Tool wagon
PRICE	Ask for Quote

Kongsberg X Series

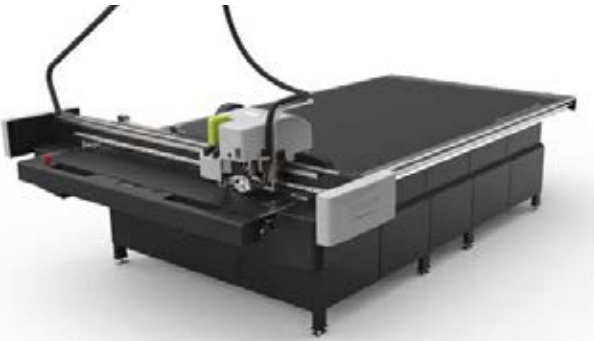


Whether your focus is signage, packaging or displays. Whether you produce vinyl, boards or wood; the Kongsberg X brings the best quality for any job or application.

The Kongsberg X is easily the most versatile digital finishing device ever introduced.

PRODUCT	Esko Kongsberg X20 • X22 • X24 • X44 • X46 • X48
DETAILS	6 sizes available from 66" x 50" to 87" x 258" • Max speed up to 33 in/sec Max acceleration up to .56 G • Auto tool Adjust Auto Tool Calibration • Rack-and-Pinion Drive System
UPGRADES/ ACCESSORIES	Conveyor System • MultiCUT-HP 3kW • MultiCUT PowerHead • FlexiHead • FoamHead
PRICE	Ask for Quote

Kongsberg X Starter



The Kongsberg X Starter comes in standard configurations for sample making, signage and display production. This Kongsberg package offers a broad selection of tools, providing quality results on a wide range of cutting, creasing, and plotting tasks. The Kongsberg X Starter can be upgraded any time; the cutting table grows with your business! Find out more about upgrading the Kongsberg X Starter.

PRODUCT	Kongsberg X24 Sign Starter • Kongsberg X24 Designer Starter
DETAILS	Size: 66" x 126" • Max speed up to 20 in/sec Max acceleration up to 0.3 G • Sign Starter - MultiCUT Toolhead Design Starter - FlexiHead Toolhead
PRICE	Ask for Quote

Kongsberg XE Series



The Kongsberg XE Series is a smaller format platform digital cutting table. It is designed to provide a fast, high-quality solution for sample making and short-run production of folding cartons and for the preparation of varnish blankets

PRODUCT	Esko Kongsberg XE10
DETAILS	31.5" x 43.3" • Max speed up to 42 in/sec Max acceleration up to 1.2 G
UPGRADES/ ACCESSORIES	Presscut Tool • Varicut Tool • Static Knife Tool Hiforce Knife Tool • Crease Tool • Vibracut Tool
PRICE	Ask for Quote

RICOH Pro C9200/C9210



The RICOH Pro C9200/C9210 Series is an affordable digital color production device with higher productivity, greater media handling capabilities, ease of use and best in class image quality. These attributes ultimately enable printers to expand business opportunities and better serve customers with quicker turnaround times and enhanced image quality. The RICOH Pro C9200/C9210 allows print and marketing service providers to produce high-value, high-quality prints.

PRODUCT	RICOH Pro C9200 • C9210
DETAILS	CMYK • 2400 x 4800 dpi VCSEL • Up to 470 gsm paper Pro C9200: 115 ppm (FC/B&W) • Pro C9210: 135 ppm (FC/B&W) Support diverse media up to 49.6" simplex / 40.5" duplex
PRICE	Ask for Quote

RICOH Pro C7200 Series



The RICOH Pro C7200 Series is ideal for small and mid-size commercial printers who are looking to offer more competitive applications to their customers without going over budget. With an added station available for white, clear, fluorescent, or invisible red ink, these high-speed, production color printers and MFPs enable commercial printers to expand their application portfolio.

PRODUCT	RICOH Pro C7210X • Pro C7210SX • Pro C7200e
DETAILS	CMYK • 2400 x 4800 dpi VCSEL • Up to 360 gsm paper • Up to 27.5 inches long Pro C7210 Series: 95 ppm (FC/B&W/5th Color) • Pro C7200e: 85 ppm (FC/B&W) White, Clear, Fluorescent and Invisible Red Toner options
PRICE	Ask for Quote

RICOH Pro C5200s / C5210s



Send a more powerful message with the high-volume, high-quality output you get from this space-saving production printer. With the RICOH Pro C5200s, you can print up to 65 ppm with breathtaking colors, advanced finishing and a familiar interface. Achieve print speeds up to 80 ppm with the RICOH Pro C5210s and add powerful print controller options, in-line finishing, advanced workflow software and other convenient capabilities.

PRODUCT	RICOH Pro C5200s • C5210s
DETAILS	CMYK • 1200 dpi x 4800 dpi • Up to 300 gsm paper Pro C5200s: 65 ppm (FC/BW) • Pro C5210s: 80 ppm (FC/BW)
PRICE	Ask for Quote

RICOH Pro 8200EX / 8200s



The RICOH Pro 8200 Series black-and-white production MFP offers a combination of power and versatility to deliver high-quality output that impresses system operators as much as customers. Take advantage of easy-to-use controls and advanced print technology to perform a wide range of commercial and corporate production tasks with incredible precision in less time. Designed to print quickly on diverse media, it adds capacity to your workflow and can contribute to your bottom line.

PRODUCT	RICOH Pro 8200EX • 8200s
DETAILS	B&W • 1200 dpi x 4800 dpi • Up to 256 gsm paper • 96 ppm Pro 8200EX: Copy • Pro 8200s: Copy/Print/Scan
PRICE	Ask for Quote

Highcon Beam



The Highcon Beam is the top-of-the-line digital cutting and creasing machine offering unparalleled efficiency and proven ROI.

PRODUCT	Highcon Beam
DETAILS	Digital cutting and creasing • Max sheet size 30" x 42" • Up to 5000 sht/hr Cardboard and label 5 - 36 pt • Microflute up to 78 pt • Variable Data Cutting Advanced Registration • CAD Light Editor
UPGRADES/ ACCESSORIES	Highcon Axis (basic pack) • Highcon Integrated Digital Stripping
PRICE	Ask for Quote

Highcon Euclid III



The Highcon Euclid III third generation digital cutting and creasing machine opens the door to countless new opportunities in high value applications and markets.

PRODUCT	Highcon Euclid III
DETAILS	Digital cutting and creasing • Max sheet size 30" x 42" • Up to 1500 sht/hr Cardboard and label 8 - 24 pt • Microflute N + F + G up to 47 pt Variable Data Cutting • Advanced Registration • CAD Light Editor
UPGRADES/ ACCESSORIES	Highcon Axis (basic pack) • Highcon Integrated Digital Stripping
PRICE	Ask for Quote

Highcon Euclid IIIS



The Highcon Euclid IIIS delivers all the capabilities and potential of digital cutting and creasing in a B2/29 in. format machine.

PRODUCT	Highcon Euclid IIIS
DETAILS	Digital cutting and creasing • Max sheet size 21" x 30" • Up to 2000 sht/hr Cardboard and label 8 - 24 pt • Microflute N + F + G up to 47 pt
UPGRADES/ ACCESSORIES	Highcon Axis (basic pack) • Highcon Integrated Digital Stripping Variable Data Cutting • Advanced Registration • CAD Light Editor
PRICE	Ask for Quote

Highcon Euclid IIIC



The Highcon Euclid IIIC digital cutting and creasing machine has been specifically engineered to suit the needs of packaging converters working in B1 or B2 format for corrugated and fluted substrates from 1 mm up to 3mm / 40-120 pt.

PRODUCT	Highcon Euclid IIIC
DETAILS	Digital cutting and creasing • Max sheet size 30" x 42" • Up to 1500 sht/hr Corrugated and Fluted Substrates (N, F, G, E & B) from 40 - 120 pt
UPGRADES/ ACCESSORIES	Variable Data Cutting • Advanced Registration • CAD Light Editor
PRICE	Ask for Quote

Scodix Enhancement Press



Scodix Ultra2 Pro



The Scodix Ultra™ Digital Presses are the most productive in the series and enable commercial PSPs and folding-carton converters to produce tangible enhancements for a wide variety of applications; marketing literature, stationery items, book covers, boxes and premium packages, greeting cards, photo albums with VDP capabilities based on a barcode system, and more – the opportunities are endless. Place your stamp on almost any printed media.

PRODUCT	Scodix Ultra Pro
DETAILS	Max sheet size 21.5" x 31.5" • 4 Polymer Reservoirs • Scodix Spot UV "Fixed Array" inkjet print-heads • Up to 2,540 x 450 DPI Automatic positioning • Auto Feeder & Stacker Substrates up to 675 gsm • Polymer Thickness up to 250 microns
UPGRADES/ ACCESSORIES	Scodix Sense • Scodix Foil on Foil • Scodix Glitter • Scodix Cast & Cure Scodix Crystals • Scodix Metallic • Scodix VDP/VDE • Scodix Braille
PRICE	Ask for Quote

Scodix S75 Press



Touching the senses with prints that stand out in a form never seen before in the world of printing, the Scodix S75 Digital Press allows you to offer your customers brilliant, high quality graphic communications products with tangible dimensions that stand out and differentiate them from their competitors.

PRODUCT	Scodix S75 Digital Enhancement Press
DETAILS	Max sheet size 20.8" x 29.5" • Scodix PolySENSE™ Clear Polymer UV "Fixed Array" inkjet print-heads • Up to 2,540 x 360 DPI Automatic positioning • Auto Feeder & Stacker Substrates up to 675 gsm • Polymer Thickness up to 250 microns
PRICE	Ask for Quote

Scodix Ultra2 Pro Foil



Scodix Foil Station is an optional module, that runs in-line with the Scodix Ultra Pro Digital Press, delivering unmatched foil enhancement capabilities, including high gloss, embossed, variety of densities for short to medium runs, using a highly advanced, highly-efficient digital process. Scodix Foil is ideal for commercial printers, coping with short to medium runs, who today have to outsource the foil application or to use a long and expensive make ready process including molds and dies, as well as for converters doing high-end short up to medium runs.

PRODUCT	Scodix Ultra Pro Foil
DETAILS	Max sheet size 21.5" x 31.5" • 4 Polymer Reservoirs • Scodix Spot • Scodix Foil UV "Fixed Array" inkjet print-heads • Up to 2,540 x 450 DPI Automatic positioning • Auto Feeder & Stacker Substrates up to 675 gsm • Polymer Thickness up to 250 microns
UPGRADES/ ACCESSORIES	Scodix Sense • Scodix Foil on Foil • Scodix Glitter • Scodix Cast & Cure Scodix Crystals • Scodix Metallic • Scodix VDP/VDE • Scodix Braille
PRICE	Ask for Quote

Scodix Digital Enhancement Effects

Scodix Spot

Spot varnish



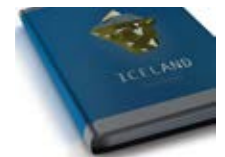
Scodix Sense

Embossing Effects



Scodix Foil

Apply Foils



Scodix Cast & Cure

3D-Holographic Effects



Scodix Crystals

Colorful, Sparkle Effects



Scodix Glitter

Glitter Effects



Scodix Metallic

CMYK + Scodix Sense



Scodix Braille

Inkjet Braille



Scodix VDP / VDE

Variable Data



Enfocus Pitstop Pro



Pitstop Pro is a plug-in for Adobe Acrobat that allows users to natively edit and preflight PDF files. This is must have software for anyone that works with PDF's. Use Pitstop to find and in many cases correct common issues including:

Missing Fonts • Incorrect Overprint

Low Resolution Images • Transparencies • RGB Objects

High Ink Coverage • Missing Bleed

PRODUCT	PitStop Pro 2018, with 1-year Updates, Upgrades and Assurance (US/CA)
DETAILS	Manual operation • PDF preflight and correction • PDF editing Low volume production
PRICE	\$906

Enfocus Pitstop Server



Pitstop Server is a standalone server application for the automated preflighting of PDF's using a hot-folder based system. The software is ideal for any workflow that must preflight many PDF's each day.

PRODUCT	PitStop Server 2018 with 1-year Upgrades and Assurance (US/CA)
DETAILS	Automated (hot-folder based) operation • Integrates with Enfocus Switch High volume production
PRICE	\$4320

Enfocus Connect



Connect ALL lets Printers provide "connectors" to customers that allow them to preflight jobs, to your specifications, before submitting them for production.

PRODUCT	Connect ALL 2018, Download includes 1-year maintenance and support (US/CA)
DETAILS	PDF creation • Preflight Distribute an unlimited number of Connectors to designers, clients and prepress.
PRICE	\$4196

Enfocus Switch



Switch is a modular software solution that allows you to automate tasks, such as receiving files or folders, sorting them and routing them to a particular process or folder.

PRODUCT	Switch 2017
DETAILS	Automate repetitive tasks • Integrate partner applications Modular approach
PRICE	Ask for Quote

Gfp 865DH-3 Laminator



PRODUCT	Gfp 865DH-3 Laminator
DETAILS	65" Wide • Dual Heat Laminator • Variable roller gap to 1" • Max Temp 266 F Thermal Encapsulation • Swing-out supply shafts • 36" Table Height Output
UPGRADES/ACCESSORIES	Rear Rewind Motor Assembly 65" Rewind Tube Assembly
PRICE	\$16,695

Gfp 563TH-3 MaxPro Laminator



PRODUCT	Gfp 563TH-3 MaxPro Laminator
DETAILS	63" Wide • Top Heat Laminator • Variable roller gap to 1" • Max Temp 122 F Swing-out Film Shafts • Machine Stand with Casters • 38" Table Height Output
UPGRADES/ACCESSORIES	Rear Rewind Motor Assembly 63" Rewind Tube Assembly • 63" Rear Rewind Motor/Slitter/Tube Assembly
PRICE	\$8,950

Gfp 300 Series Laminator



PRODUCT	Gfp 355TH • Gfp 363TH
DETAILS	Gfp 355TH: 55" wide • Gfp 355TH: 63" wide Variable roller gap to 1" • Max Temp 122 F
UPGRADES/ACCESSORIES	Stand, Foot Switch & Rewind included
PRICE	Gfp 355TH - \$6,295 • Gfp 363TH - \$7,295

Foster SteelTrak



PRODUCT	Foster SteelTrak 65" Cut Length
DETAILS	Perfect for Cutting tougher, thicker rigid substrates up to 1/2" including Aluminum composite, Corrugated plastic, Foam Board, Gatorboard, PVC
UPGRADES/ACCESSORIES	Freestanding Kit • V-Groove Cutting Tool • Squaring Arm Extension Glass Cutting • Replacement Blades & Cutting Wheels
PRICE	\$4,165.00

Foster Evolution-E2 Series



PRODUCT	Foster Evolution- E2 Cut Length 104"
DETAILS	Perfect for Cutting Up to 1/2" Acrylic, Banners, Corrugated plastic, Foam Board Fabric, Textiles, Inkjet media, Paper, PVC board, Tissue
ACCESSORIES	Evolution 2 Bench • 45mm Circular textile blades
PRICE	\$2,035.00

Foster On-A-Roll Lifter Low Profile



PRODUCT	Foster On-A-Roll Lifter Low Profile
DETAILS	Perfect complement to HP Latex 1500, 3000 Series printers Lift media up to 660 lbs. and up to 16.4 feet wide
PRICE	\$1,695.00

X-Rite i1 Publish Pro 2



PRODUCT	X-Rite i1 Publish Pro2
DETAILS	Includes i1Pro 2 Spectrophotometer and i1 Profiler Software for profiling cameras, displays, projectors, scanners, and printers.
PRICE	\$2,499

X-Rite i1 Basic Pro 2



PRODUCT	X-Rite i1 Basic Pro2
DETAILS	Includes i1Pro 2 Spectrophotometer and i1 Profiler Software for profiling displays, projectors, and scanners only.
PRICE	\$1,419

X-Rite i1i0 Automated Scanning Table



PRODUCT	X-Rite i1i0 Automated Scanning Table
DETAILS	DOES NOT INCLUDE SPECTROPHOTOMETER.
PRICE	\$2,995

Caldera TotalColor



PRODUCT	Caldera TotalColor
DETAILS	Includes UV Cut Filter, sample holders for heavy/thick media, reflective & transmission readings
PRICE	\$9,090.00

Caldera TotalColor qb



PRODUCT	Caldera TotalColor qb
DETAILS	Measure any reflective or transmissive media in M1 condition. Detachable head. Includes sample holders for heavy/thick media and M1 measurements
PRICE	\$11,800.00

X-Rite eXact Spectrodensitometer



PRODUCT	X-Rite eXact Standard • X-Rite eXact Advanced
DETAILS	eXact Standard: Bluetooth, 2mm aperture for North America eXact Advanced: Bluetooth, 2mm aperture for North America
PRICE	Ask for Quote

Chromix™ Curve4 Calibrate



PRODUCT	CHROMIX Curve4 Calibrate
DETAILS	G7 Calibration Software
PRICE	\$1599

Chromix ColorThink Pro



PRODUCT	CHROMIX ColorThink Pro
DETAILS	Software for ICC Profile Analysis
PRICE	\$399

Prisco digital

PriscoDigital LLC

26 Blanchard St. • Newark, NJ 07105

Ph: (973) 589-7800 ext 2209 • pdsales@prisco.com

www.prisco.com/priscodigital-solutions/