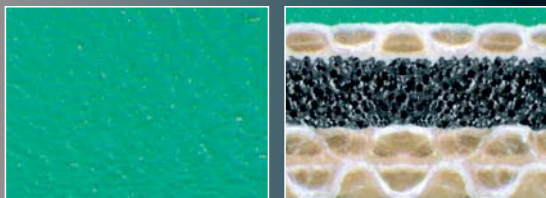


**CONTI-AIR<sup>®</sup>**  
BLANKET TECHNOLOGY

# CONTI-AIR<sup>®</sup> EVOLUTION TR

Print to perfection. With the blanket for excellent ink transfer and neutral paper transport on coldset presses.



Our printing blankets have a special CONTI-AIR<sup>®</sup> compressible layer of closed microcells with over pressure.

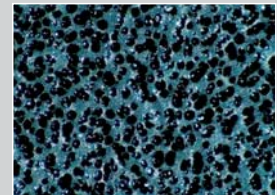


Print to  
perfection.

## CONTI-AIR® EVOLUTION TR

- ◊ Ideal for 4-high tower design
- ◊ Neutral web feed
- ◊ Reduced linting
- ◊ No blanket gapping on the cylinder
- ◊ Defined thickness reduction to reach optimum working thickness
- ◊ Good quick release

CONTI-AIR® printing blankets have a layer of closed microcells which are under positive gas pressure. This innovative concept gives unsurpassed advantages for high quality sheetfed offset printing.



### ◊ Technical data

Printing surface
Color: green
Surface: ground
Roughness Rz (DIN 4768): 11 µm
Roughness Ra (DIN 4768): 1.8 µm
Surface hardness (DIN 53505): 54° Shore A

Compressibility
At 1,350 KPa: 0.210 mm ± 0.03 mm

Fabric Layers
3 precision calendered fabric plies

Elongation (DIN 16621 & 53354)
0.75 % ± 0.15 % at 500 N/5 cm

Nominal thickness (ISO 12636)
1.69 / 1.95 mm - 2.18 mm

True Rolling (Paper feed characteristics)
neutral

distributed by:

**Prisco®**

**PRISCO**  
26 Blanchard Street · Newark, NJ 07105 · USA  
Phone: +1 973 589 7800 · Fax: +1 973 589 3225  
[www.prisco.com](http://www.prisco.com)

**Continental**   
**CONTITECH**

**ContiTech North America**  
136 Summit Avenue · Montvale, NJ 07645 · USA  
Phone: +1 201 930 0600 · Fax: +1 201 930 0050  
[www.contiair.com](http://www.contiair.com)