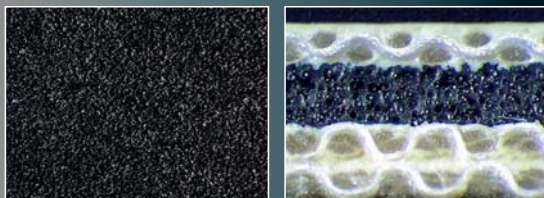


**CONTI-AIR®**  
BLANKET TECHNOLOGY

# CONTI-AIR® EBONY

Print to perfection. With the tough  
and compressible universal blanket for  
sheet-fed and rotary offset presses.



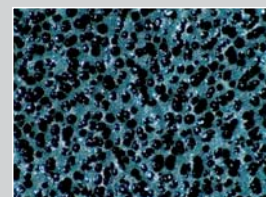
Our printing blankets have a special CONTI-AIR® compressible  
layer of closed microcells with over pressure.

Print to  
perfection.

## CONTI-AIR® EBONY

- ◊ Resistant to conventional, hybrid and UV inks and cleaning agents
- ◊ Reduces linting
- ◊ Good ink laydown on absorbent and non-absorbent substrates
- ◊ Suitable for printing metallized ink and substrates
- ◊ Good quick release
- ◊ Approved in waterless offset

CONTI-AIR® printing blankets have a layer of closed microcells which are under positive gas pressure. This innovative concept gives unsurpassed advantages for high quality sheetfed offset printing.



### ◊ Technical data

Printing surface
Color: black
Surface: fineground
Roughness Rz (DIN 4768): 6 µm
Roughness Ra (DIN 4768): 0.9 µm
Surface hardness (DIN 53505): 55° Shore A

Compressibility
At 1,350 KPa: 0.195 mm ± 0.03 mm
Fabric Layers
3 precision calendered fabric plies
Elongation (DIN 16621 & 53354)
0.75 % ± 0.15 % at 500 N/5 cm
Nominal thickness (ISO 12636)
1.69 / 1.95 mm
True Rolling (Paper feed characteristics)
⊕ slightly positive

distributed by:

**Prisco®**

**PRISCO**  
26 Blanchard Street · Newark, NJ 07105 · USA  
Phone: +1 973 589 7800 · Fax: +1 973 589 3225  
[www.prisco.com](http://www.prisco.com)

**Continental**   
**CONTITECH**

**ContiTech North America**  
136 Summit Avenue · Montvale, NJ 07645 · USA  
Phone: +1 201 930 0600 · Fax: +1 201 930 0050  
[www.contiair.com](http://www.contiair.com)



EUROPEAN WATERLESS  
PRINTING ASSOCIATION e.V.  
**EWPA**